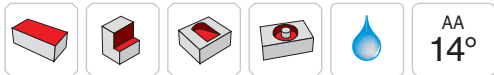
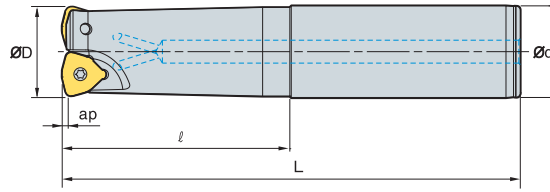


# HRMDS13



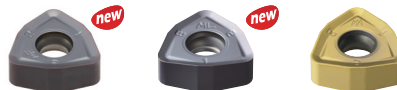
• AR: -7°  
• RR: -14° ~ -16°

(mm)

Designation		ØD	Ød	l	L	ap	
HRMDS 1332HR-2S32	2	32	32	70	150	2	0.8
1332HR-2M32	2	32	32	120	200	2	1
1332HR-2L32	2	32	32	180	300	2	1.6
1333HR-2S32	2	33	32	70	150	2	0.8
1333HR-2M32	2	33	32	70	200	2	1.1
1333HR-2L32	2	33	32	70	300	2	1.7
1335HR-2S32	2	35	32	50	150	2	0.8
1335HR-2M32	2	35	32	50	200	2	1.1
1335HR-2L32	2	35	32	50	300	2	1.7
1340HR-3S32	3	40	32	50	150	2	0.8
1340HR-3M32	3	40	32	50	250	2	1.4
1340HR-3L32	3	40	32	50	300	2	1.7
1340HR-3S40	3	40	40	60	150	2	1.2
1340HR-3M40	3	40	40	130	250	2	2.1
1340HR-3L40	3	40	40	180	300	2	2.6
1340HR-3S42	3	40	42	60	150	2	1.4
1340HR-3M42	3	40	42	130	250	2	2.3
1340HR-3L42	3	40	42	180	300	2	2.7
1350HR-3S32	3	50	32	50	150	2	1.1
1350HR-3M32	3	50	32	50	250	2	1.7
1350HR-3L32	3	50	32	50	300	2	2
1350HR-3S40	3	50	40	50	150	2	1.5
1350HR-3M40	3	50	40	50	250	2	2.4
1350HR-3L40	3	50	40	50	300	2	2.9
1350HR-3S42	3	50	42	50	150	2	1.6
1350HR-3M42	3	50	42	50	250	2	2.6
1350HR-3L42	3	50	42	50	300	2	3.1

## Available inserts

WNMX-MF      WNMX-ML      WNMX-MM



Designation	Cermet		Coated										Uncoated			page		
	CN200	CN30	NCM325	NC5330	NCM535	NCM545	PC2505	PC2510	PC3600	PC3700	PC6510	PC9530	PC9540	PC5300	PC5400		ST30A	G10
WNMX 130520ZNN-MF									●					●	●			
130520ZNN-ML														●	●			
130520ZNN-MM							●	●	●	●		●	●	●	●			

## Parts

Specification		
Ø32~Ø50	FTKA0412B	TW15S

Available inserts E28

